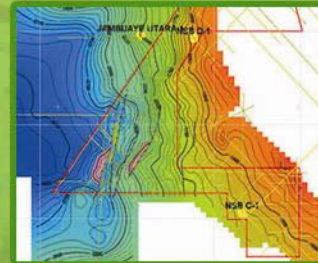
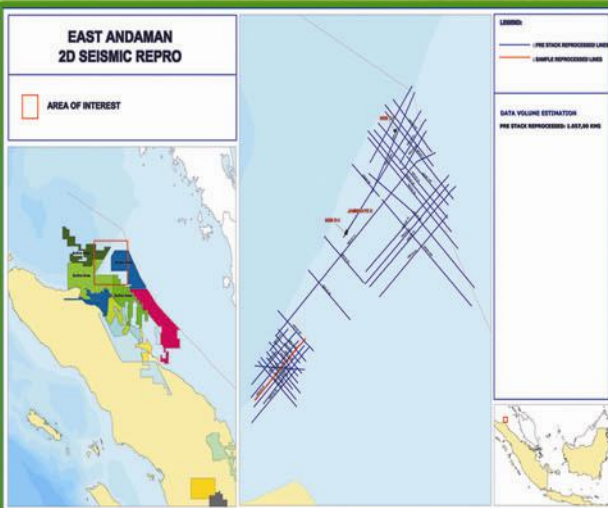
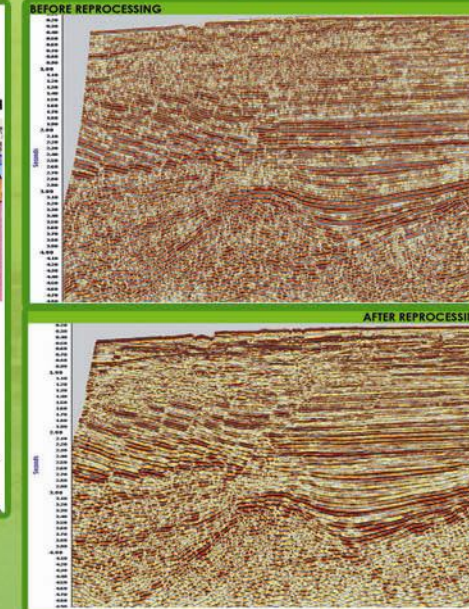
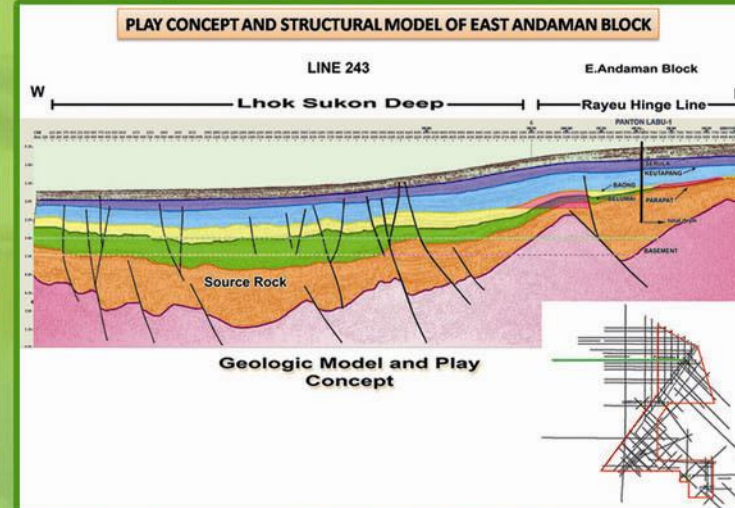


EAST ANDAMAN WESTERN INDONESIA



ELEMENTS	EAST ANDAMAN BLOCK
Source Rocks	Late Eocene-Early Miocene Shale of Parapat Fm TOC = 0.50%; H ₂ 241 mg H ₂ g TOC (based on Jambu Aye (Usum 1 Well)) TOC = 0.66%; H ₂ 125 mg H ₂ g TOC (based on Pantontabu 1 Well) Kerogen types : Type II and III
Reservoir	Middle Miocene Sandstone of Baeng Fm : @ 10 - 30 % Sw 70-100 % Late Oligocene-Early Miocene Limestone of Bekamal Fm Late Eocene-Early Miocene Sandstone of Parapat Fm
Expulsion	Late Eocene - Present
Migration	Vertical and Lateral Migration
Trap Formation	Late Eocene - Middle Miocene
Trap Types	Structural Traps : Faulted Anticline (Three - ways) Stratigraphic Traps : Reef and Outlying



Hydrocarbon Prospect Evaluation & Seismic Reprocessing

The East Andaman is an open offshore area offered through regular tender in late 2009. It is located in the North Sumatra Hydrocarbon Prolific Basin water with water depth less than 400 m. The existing of regional hydrocarbon signature and the local evidence of hydrocarbon existence makes the area interesting for exploration.

PT. Patra Nusa Data is currently conducting Hydrocarbon Study & Seismic Reprocessing to support the exploration. The East Andaman has 40 prestack reprocessed lines with total length 1,057 Km.

Data Available in East Andaman consist of :

- Reprocessed Seismic : 1,057 Km
- Well : 4 wells
- Seismic (original post stack) : 7,832 Km
- G & G Report : 9 Report & 5 Map

FOR FURTHER INFORMATION :

OPERATION OFFICE
TAMAN TEKNO SEKTOR XI, BLOK G2/1-BSD
Tangerang, Banten, 15314
TELP : +62 21-7588 2510, 7588 2519, FAX: +62 21-7588 2511
EMAIL : marketing@patranusa.com www.patranusa.com

HEAD OFFICE
Graha Elnusa Building 5th Floor Jl. TB. Simatupang Kav. 1 B
Jakarta Selatan 12560
Phone : 62 -21 781 6770 to 73
Fax : 62-21 781 6775