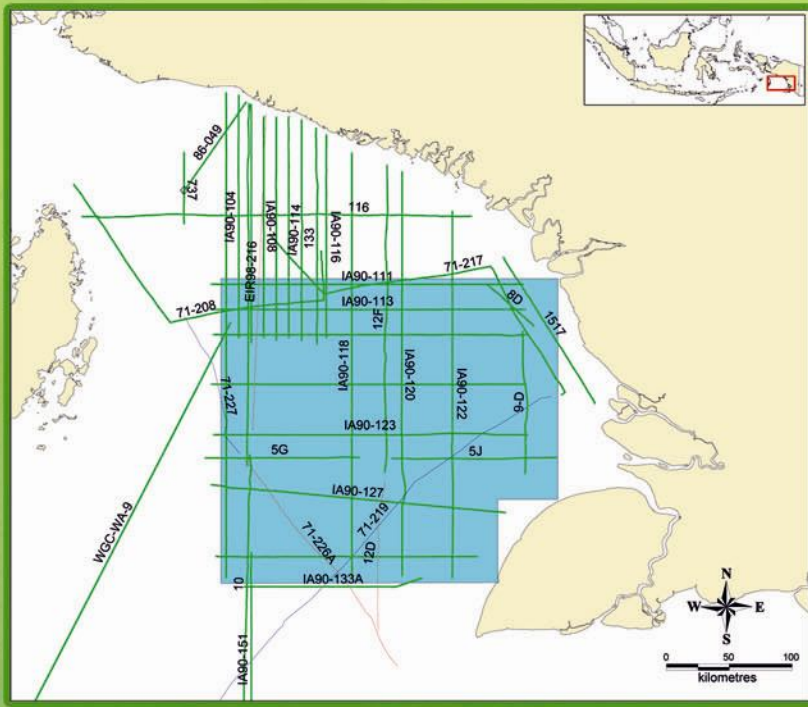
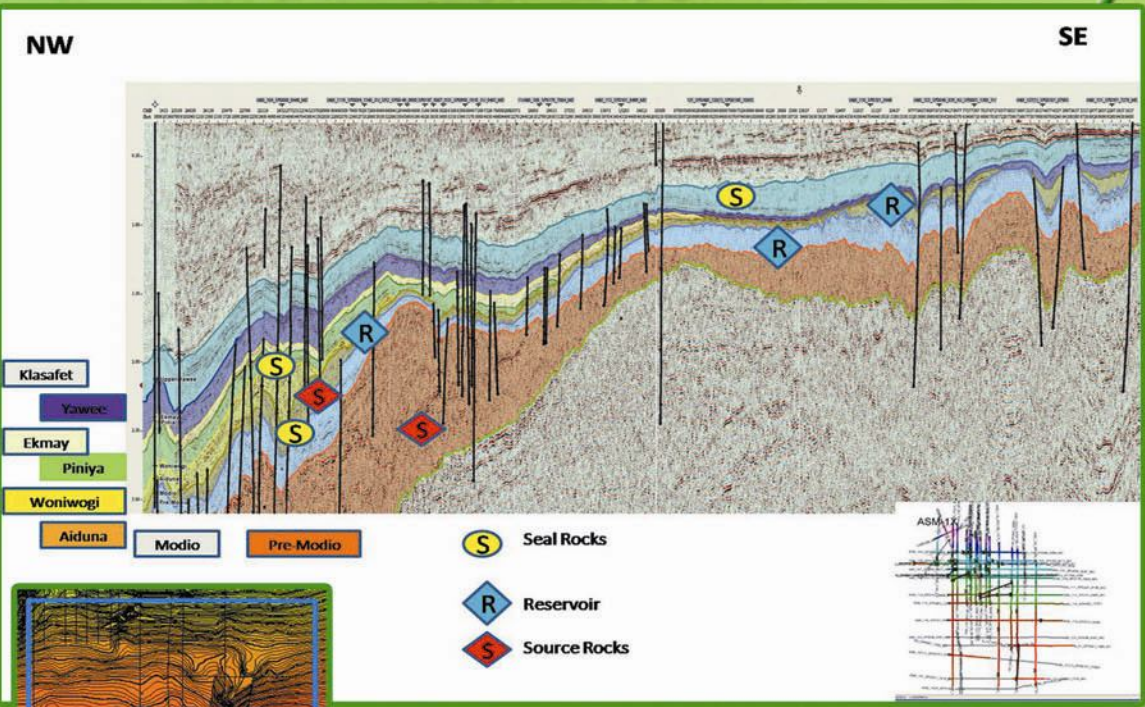


EAST ARU EASTERN INDONESIA



Hydrocarbon Prospect Evaluation

East Aru block is located in the center of the Arafura Sea, Sahul basin with water depth less than 200 m. The Arafura Sea has not been explored intensively, the similarity of its tectonic settings with northern Australia basin such as Petrel and Bonaparte as a proven oil and gas basin would encourage the exploration in the area of interest. The hydrocarbon study of this block is to emphasize on the identification of the prospect and leads especially at Mesozoic sediment.

Data Available in East Aru consist of :
 Seismic (original post stack) : more than 5,000 Km
 G & G Report : 2 Report & 5 Map

ELEMENTS	EAST ARU BLOCK
Source Rocks	Pre - Modio Shale (Based on Kola-1) TOC Average 0.17, HI Average 112, RO average 1.25 Aiduna Shale TOC Average 1.26, HI Average 116, RO average 0.62
Reservoir	Modio (Based on Kola-1) 85 - 96 % SW 33 - 100% Based on Kola-1 Aiduna Sandstone 83 - 27% SW 28 - 100% Based on Kola-1
Migration	Vertical & Lateral Migration
Trap Formation	Aiduna Shale Piniya shale
Trap Types	Structural Traps : Faulted Anticline (Three ways) Stratigraphic Traps : Unconformity

FOR FURTHER INFORMATION :

OPERATION OFFICE
 TAMAN TEKNO SEKTOR XI, BLOK G2/1-BSD
 Tangerang, Banten, 15314
 TELP : +62 21-7588 2510, 7588 2519, FAX: +62 21-7588 2511
 EMAIL : marketing@patranusa.com www.patranusa.com

HEAD OFFICE
 Graha Elnusa Building 5th Floor Jl. TB. Simatupang Kav. 1 B
 Jakarta Selatan 12560
 Phone : 62 -21 781 6770 to 73
 Fax : 62-21 781 6775