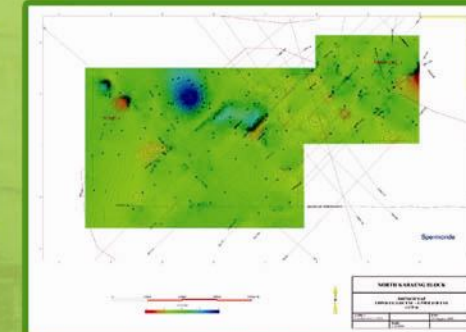
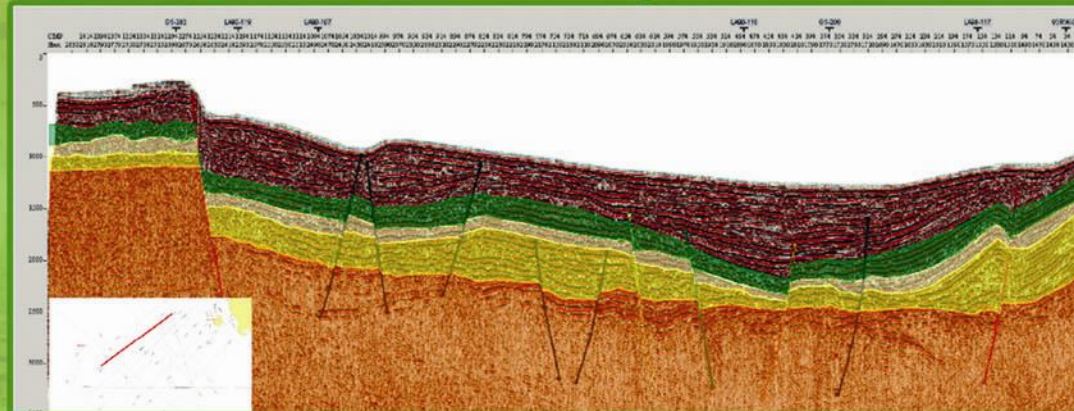
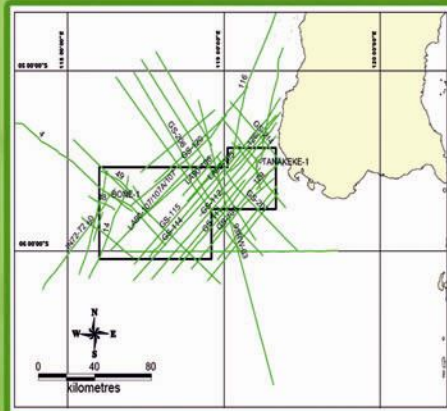


NORTH WEST KARAENG EASTERN INDONESIA



ELEMENTS	NW KARAENG
Source Rocks	Toraja Shale
Reservoir	Eocene Toraja Sandstone & Oligocene Tonasa Limestone
Migration	Vertical & Lateral Migration
Trap Formation	Regional Miocene shale for Tonasa Limestone Shale Tonasa for Toraja Sandstone
Trap Types	Structural Traps : Faulted Anticlyn (Three ways closure & four way closure)

Hydrocarbon Prospect Evaluation & Seismic Reprocessing

The North West Karaeng is an offshore open area located in the Spermonde Basin. Several wells drilled in the basin demonstrate the presence of oil and gas shows. The vitrinite reflectance R_o from samples of the well achieve a maturity stage with respect to both oil and gas - prone organic matter. It is believed that the area in the Spermonde Shelf is still being an attractive target for exploration. PT. Patra Nusa Data conducted Hydrocarbon Study in the area and reprocessed some 2000 km 2D seismic lines.

Data Available in North West Karaeng consist of :

Reprocessed Seismic : 2000 Km
 Well : 2 wells
 Seismic (original post stack) : 3355 Km
 G & G Report : 11 Report & 16 Map

FOR FURTHER INFORMATION :

OPERATION OFFICE
 TAMAN TEKNO SEKTOR XI, BLOK G2/1-BSD
 Tangerang, Banten, 15314
 TELP : +62 21-7588 2510, 7588 2519, FAX: +62 21-7588 2511
 EMAIL : marketing@patranusa.com www.patranusa.com

HEAD OFFICE
 Graha Elnusa Building 5th Floor Jl. TB. Simatupang Kav. 1 B
 Jakarta Selatan 12560
 Phone : 62 -21 781 6770 to 73
 Fax : 62-21 781 6775