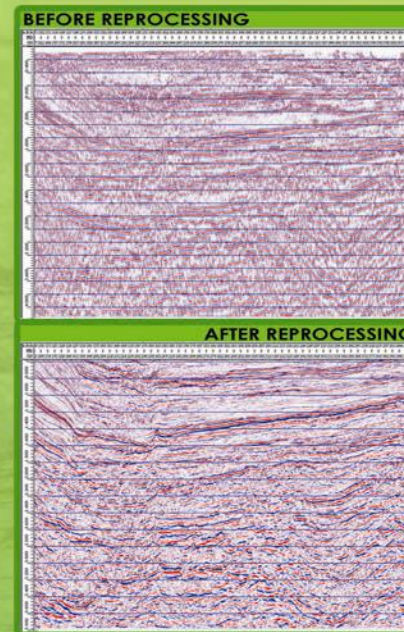
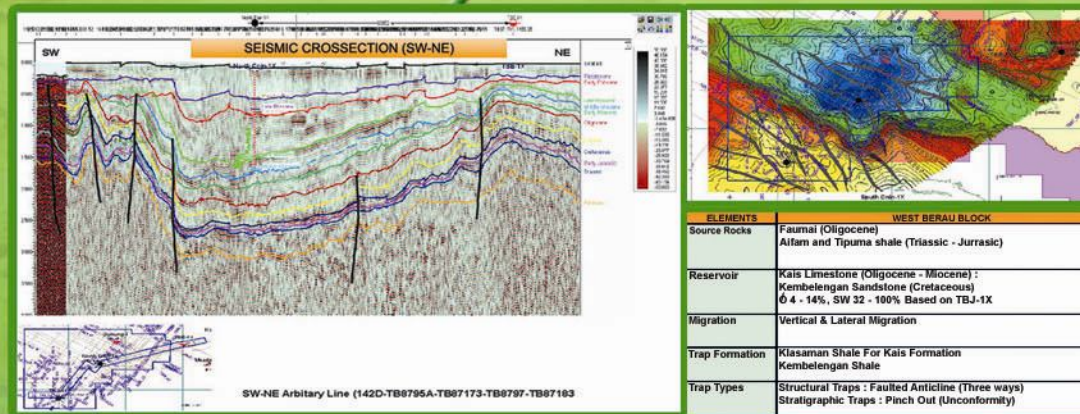
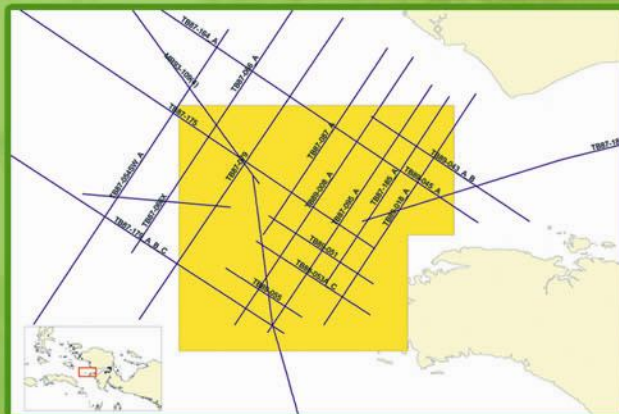


WEST BERAU EASTERN INDONESIA



Hydrocarbon Prospect Evaluation & Seismic Reprocessing

The West Berau is open block located between Misool basin, Bintuni basin, and Salawati basin. The block is bounded to east by active Berau block in which there are numerous oil and gas fields, such as: Wiriagar, Ubadari and Vorwata fields. Bula oil field is located some 100 km south of the area of interest. The Hydrocarbon Study and Seismic Reprocessing has been conducted in this block. The petroleum system is working in the area showing some identification of hydrocarbon prospecting. There are 20 prestack reprocessed lines (TB series) with total length 1.463 Km crossing the area and more than 900 Km prestack reprocessed lines available in the surrounding.

Data Available in West Berau consist of :

Reprocessed Seismic : 1,463 Km
Well : 3 wells
Seismic (original post stack) : 9,462 Km
G & G Report : 19 Report & 16 Map

FOR FURTHER INFORMATION :

OPERATION OFFICE
TAMAN TEKNO SEKTOR XI, BLOK G2/1-BSD
Tangerang, Banten, 15314
TELP : +62 21-7588 2510, 7588 2519, FAX: +62 21-7588 2511
EMAIL : marketing@patranusa.com www.patranusa.com

HEAD OFFICE
Graha Elnusa Building 5th Floor Jl. TB. Simatupang Kav. 1 B
Jakarta Selatan 12560
Phone : 62 -21 781 6770 to 73
Fax : 62-21 781 6775