

## Advantage Features

### Map Query

It provides GSI modeto browse metadata object which consist tool to select object, single object and pan tool to shove the area of interest in map.

### Text Query

The Non GIS mode will be used to make a query from the database with some criteria that you can input it.

### Entity

Entity menu allows you to get metadata covers on Basin, Working Area, Field, Seismic and Well both using GIS and Non-GIS mode. The metadata on document can get using non-GIS mode.

### Report

Inameta DaVal Platinum has asset button to make report of all your selected record. The asset button is only appeared in the Well Summary, Working Area and Seismic Line forms.

### Overlying

Each asset cab be overlying with another asset, such as seismic or well overlaid on the working areas.

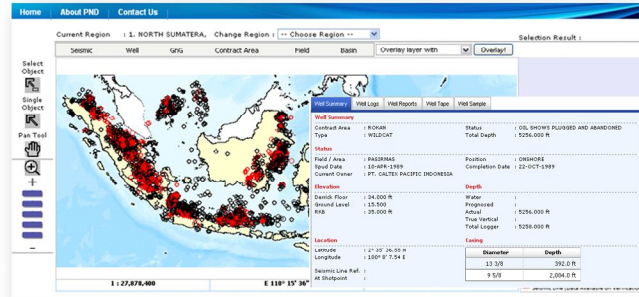
## Data Supported

### Inameta DaVal Platinum Data:

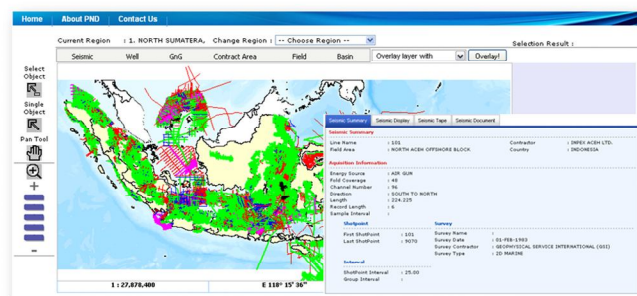
Indonesia Well log and Report Summary, Seismic Summary, Working Area and Field Summary and Technical Report.

### System Requirement

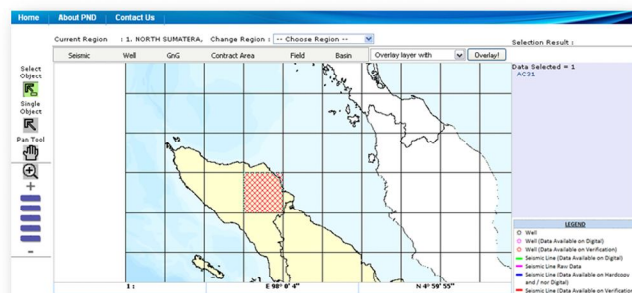
Best View in 1024 x 760 with Internet Explorer 6.0 or higher. Version 2.0 . Disable pop-up blocking for [www.patranusa.com](http://www.patranusa.com)



On the Well Summary form, both of Well Logs and Well Reports have a similar way to make the print out all of your selected record using GIS or non-GIS mode



Seismic information covers on Seismic Line Summary which is summary information of the line in the survey and the Seismic Display which is information of the seismic data display information.



Technical Document consist of Map and Report which consist of Exploration Production Activity, Contract Area Historical Summary and Study Activity

## FOR FURTHER INFORMATION :

**HEAD OFFICE**  
Graha Elnusa 5th Floor  
Jl. TB. Simatupang  
Kav. 1B Jakarta Selatan  
12560 Phone:+62 -21  
781 6770 to 73,  
Fax:+62-21 781 6775  
[marketing@patranusa.com](mailto:marketing@patranusa.com)

**OPERATION OFFICE**  
Taman Tekno Sector XI,  
Block G2/1 BSD Tangerang  
Banten, 15314. Phone:  
+62 21-7588 2510,  
7588 2519, fax:+62 21-  
7588 2511  
[http:// www.patranusa.com](http://www.patranusa.com)